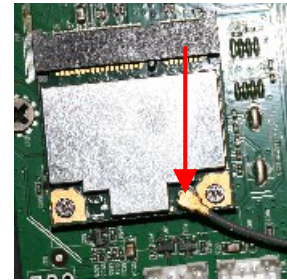
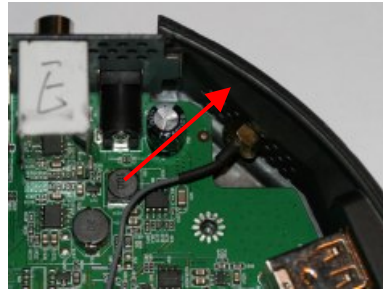
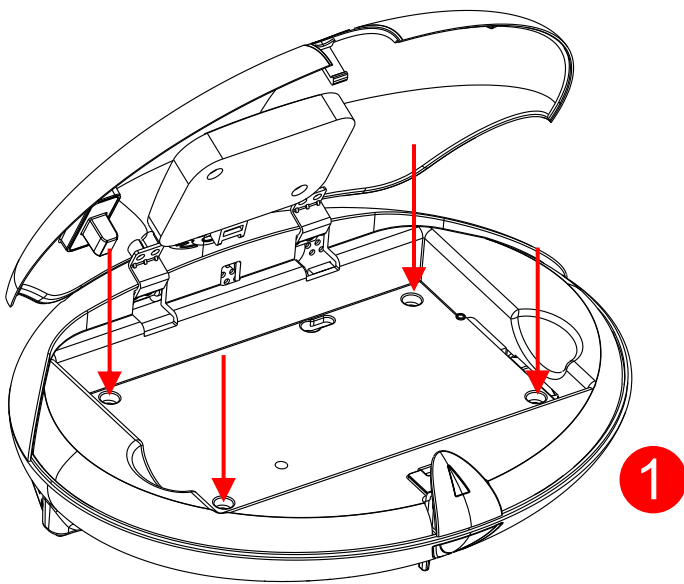


MED20PCIE Fitment Instructions to MED1000X3D



1) Unscrew the 4 x Allen bolts in the X3 HDD Bay '1' ①

2) Lift the top section of the X3

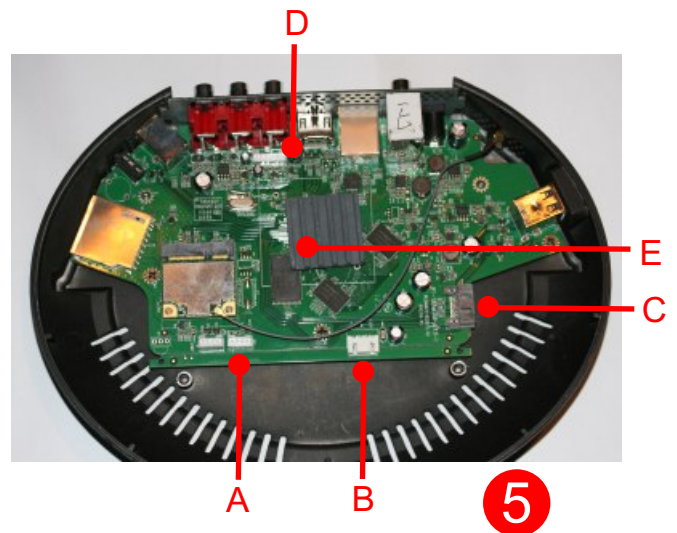
3) Unplug connectors ⑤

A) IR and 'On' 'Off'

B) Sata Power

C) Sata Data Connector

D) Nav Button rear side of PCB



4) Carefully lift cover off completely

5) Fit PCIE Card and Antenna Cable - Note the SMA connector has a flat side so it must be aligned and then pushed through the casing hole. Antenna connector must be connected to the PCIE Card as shown ② ③ ④

6) There is a white colour heat transfer pad that bonds the top of the 1186 IC to the casing – make sure that this is still in position as shown by E ⑤

7) Be careful as now the casing could get scratched so insert some bubble packing between the base and the cover on the rear.

8) Re Plug Wire Connectors into PCB Connectors A,B,C,D and align cover section

9) Screw together with 4 x Allen bolts